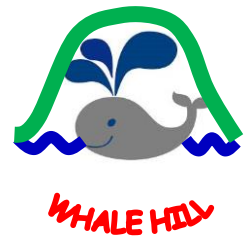


Whale Hill Primary School  
Sandsend Road  
Eston  
Middlesbrough  
TS6 8AD

Head Teachers: Mrs M. Mellor and Mrs S. Marsden  
Deputy Head Teacher: Mr P. Forster  
Chair of Governors: Mrs K. Dobson



**Spring Newsletter 1**  
**January 2020**

Dear Parents and Carers,

Happy New Year and welcome back to school to everyone. The children are all refreshed after their Christmas break and it sounds like Santa has been very generous as usual! Thank you for supporting our uniform policy and sending the children back to school so smartly turned out and with their PE uniforms.

**School Attendance**

Well done to everyone for coming to school every day; last term 165 children received prizes for finishing the term with 100% attendance- well done keep it up! It makes such a difference to children's enjoyment and progress in school if they are here every day and don't miss out on everything school has to offer.

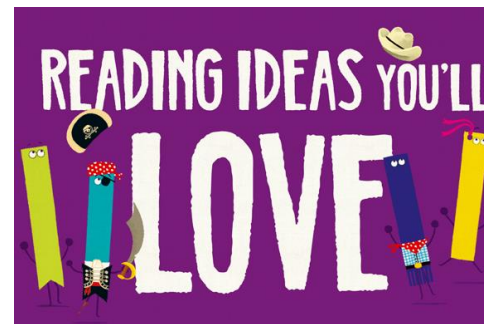
As always we have lots of exciting activities planned for this term for the children and reading will continue to be a key focus for all of us.



**World Book Day 2020**

**5<sup>th</sup> March**

To celebrate World Book day  
we will again be inviting  
children to dress as a  
favourite character from a  
book.



**HELP YOUR CHILD TO IMPROVE THEIR READING**

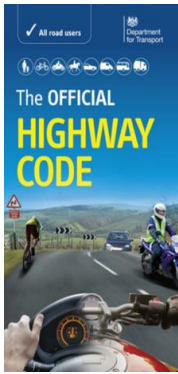
Thank you for continuing to help your child read at home, it makes a big difference to their reading progress. Please read with and to your child as often as you can; all reading material is encouraged; books, magazines, newspapers, comics, timetables-paper and digital. There are lots of activities on the World Book Day site: [www.worldbookday.com](http://www.worldbookday.com)

Please encourage your child to look after their school reading book while it is at home and return it to school in good condition.

Tel: 01642 454339

Fax: 01642 454339

Email: [schooloffice@whalehill.rac.sch.uk](mailto:schooloffice@whalehill.rac.sch.uk)  
[headteacher@whalehill.rac.sch.uk](mailto:headteacher@whalehill.rac.sch.uk)



### **KEEPING SAFE**

Mrs Marsden has been assisting community traffic police outside of school to make sure all our children arrive safely. This has been appreciated by most parents and carers but there is still some illegal or inconsiderate parking.

**Please bear in mind the Highway Code rules 238 and 145:**

- You **MUST NOT** wait or park on double yellow lines at any time.
- **DO NOT** stop or park near a school entrance
- **DO NOT** stop or park anywhere you would prevent access for Emergency Services
- You must not drive or park on the pavement.

### **School Holiday dates 2020-2021**

School holiday calendars are attached to help you plan holidays. Please may we remind you about our policy on holidays in term time?

**The law does not grant parents an automatic right to take their child out of school for holidays during term time. You must apply for permission in advance and the request for leave of absence must come from a parent with whom the child normally lives.**

**Holidays during term time are NOT classed as exceptional circumstances and will not be authorised. Unauthorised absences are referred to the Attendance and Welfare Officer and may result in a £60/120 fine, per parent, per child.**

**Where leave of absence is taken without authorisation, a warning letter or penalty notice may be issued, depending upon the individual circumstances of each case. If a child's attendance is below 95% in the previous 12 months prior to the leave of absence being taken, a penalty notice is likely to be issued. Absences will not be authorised in September, January – May (inclusive) or other periods of the year when children are taking mandatory tests.**

The school office still receive requests for leave of absence for family holidays in term time which we cannot authorise even if the holiday is a surprise/gift from a relative/birthday treat/only time work permits etc. Attendance and Welfare Officer Lisa Johnson is in school every Wednesday and she will challenge all requests for leave of absence and suspected holidays during term time. She is happy to speak to any parents or carers about school attendance matters.

#### **Upcoming dates to remember:**

**14<sup>th</sup> February-school closed for mid-year PD day**  
**17<sup>th</sup> February-school closed for 1 week for half term**  
**2<sup>nd</sup> March-spring term parents meetings.**  
**5<sup>th</sup> March-World Book Day.**  
**6<sup>th</sup> April-school closed for 2 weeks for the Easter break**  
**8<sup>th</sup> May-school closed for May Day bank holiday**  
**11<sup>th</sup> SATs week**

**Kind Regards**

**Mrs Mellor and Mrs Marsden**